



Neurological Council of WA
Supporting people with neurological conditions

Freecall
1800 645 771

Team

Executive Director: Adjunct Assoc. Professor Kathy McCoy

Chair, Board of Directors: Professor Charles Watson

Community Neurological Nurses: Metropolitan, Great Southern, South West, Mid West

Support: Operations, Finance, Administration, Quality & Continuous Improvement, Research, Marketing & Communications



Centre for Neurological Support



Neurological Council of WA
Supporting people with neurological conditions



AUSTRALIAN ASSOCIATION FOR COGNITIVE AND BEHAVIOUR THERAPY



mnd
Western Australia



epilepsywa



nfa
Australia



parkinson's
WESTERN AUSTRALIA



spina bifida and hydrocephalus association
western australia



Headache Help



hope dignity awareness



lads
Learning & Attention Disorders Society of WA (Inc.)



stroke foundation



Muscular Dystrophy WA



huntington's western australia



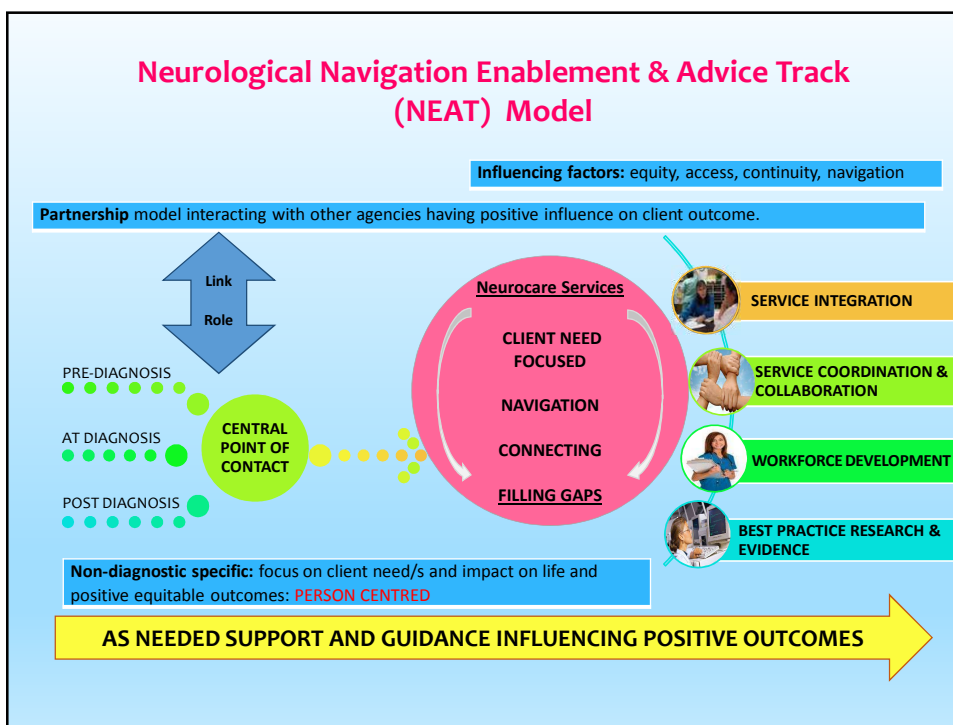
mecfs
Myalgic Encephalomyelitis
Chronic Fatigue Syndrome

Unmet Needs

- > 600 neurological conditions
- Estimated 1 in 8 people live with a neurological condition
- Many neurological conditions lacked specialist organisations providing specific support
- 2001, **Community Neurological Nurse** service introduced in some WA regions:
 - Grew to service Metro, South West, Great Southern and Mid West
 - Funded by State Government
 - Service named **Neurocare**



Neurological Council of WA
Supporting people with neurological conditions



Generic Community Neurological Nurse

“A nurse with specialist skill and competency in the broad area of neurological health management and support. The focus of their therapeutic approach is on the individualised and holistic wellbeing of the client, regardless of neurological diagnosis or symptom impact.”

(McCoy, K., June 2016)




Teleneurocare

- * Commenced 2017 in Wheatbelt
- * Service gap identified
- * Significant support and encouragement from Telestroke project (champion Steph Waters and Karen Gifford)
- * Support to develop capability in all regional offices (GS, SW, MW, Metro)
- * Large percentage of consults occur via Teleneurocare


Sustainable Health Review

<p>1: Commit & collaborate</p> <ul style="list-style-type: none"> • General health Smoking Cessation certified • ECU ABIC role • Common value based outcomes • Hub & spoke model (care closer to home) support visiting neurologists 	<p>3: Great beginning & dignified end</p> <ul style="list-style-type: none"> • Impact of neuro palliation lead way in MND & other neurological conditions
<p>2: Improve mental health outcomes</p> <ul style="list-style-type: none"> • FND work • Contemporary integrated models of care • Mental health/neuro/substance abuse paper 	<p>4: Person-centered & seamless access</p> <ul style="list-style-type: none"> • CNS • Partnerships • Outpatient support/Hospital in-reach • Country links lead telehealth provider • Community model of care

 Neurological Council of WA
Supporting people with neurological conditions

Sustainable Health Review

<p>5: Safety & value</p> <ul style="list-style-type: none"> • Contemporary UK benchmarked care model • ABF model developments • Alignment with AQHSM standards • Focus on community needs, equity & value 	<p>7: Culture & workforce support new models of care</p> <ul style="list-style-type: none"> • Value on community • Advanced practice • Equity of access through competency
<p>6: Invest in digital health & use data wisely</p> <ul style="list-style-type: none"> • Telehealth leads & capacity • ABF & outcome work • Epidemiological lead work • Research projects 	<p>8: Innovate for sustainability</p> <ul style="list-style-type: none"> • Innovation, partnerships, hub & spoke • Research & quality improvement focus

 Neurological Council of WA
Supporting people with neurological conditions

Key partners/current developments

- Lead community telehealth community organisation
- Lead testing of Activity Based Funding (ABF) in community setting
- Developing GP liaison roles
- Fiona Stanley Hospital in-reach project
- Development of Functional Neurology Service & community support
- ECU Aboriginal Brain Injury Coordinator role (NHMRC project)
- Alignment preliminary directions in Sustainable Health Review
- Benchmarking with Liverpool UK Walton Centre for Neurosciences
- WAPHA neurological pathways